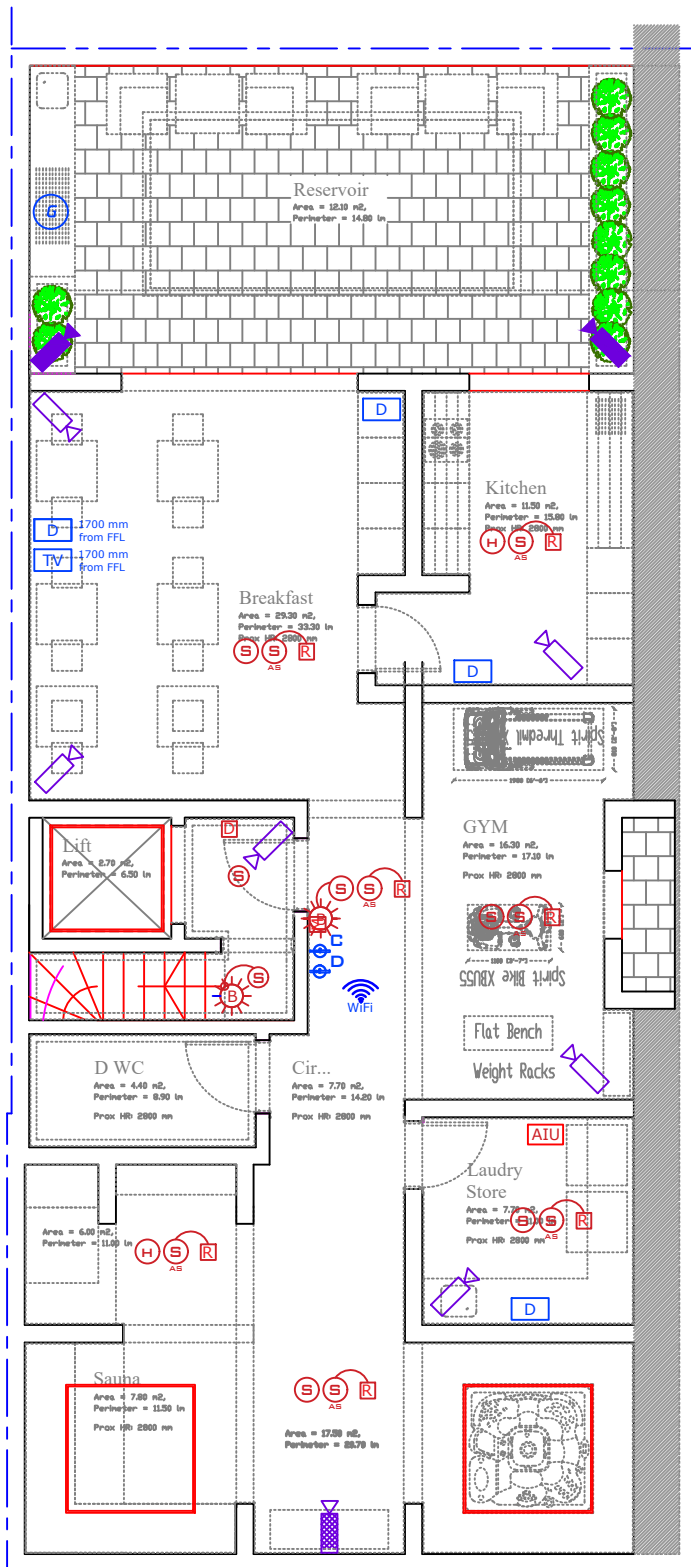


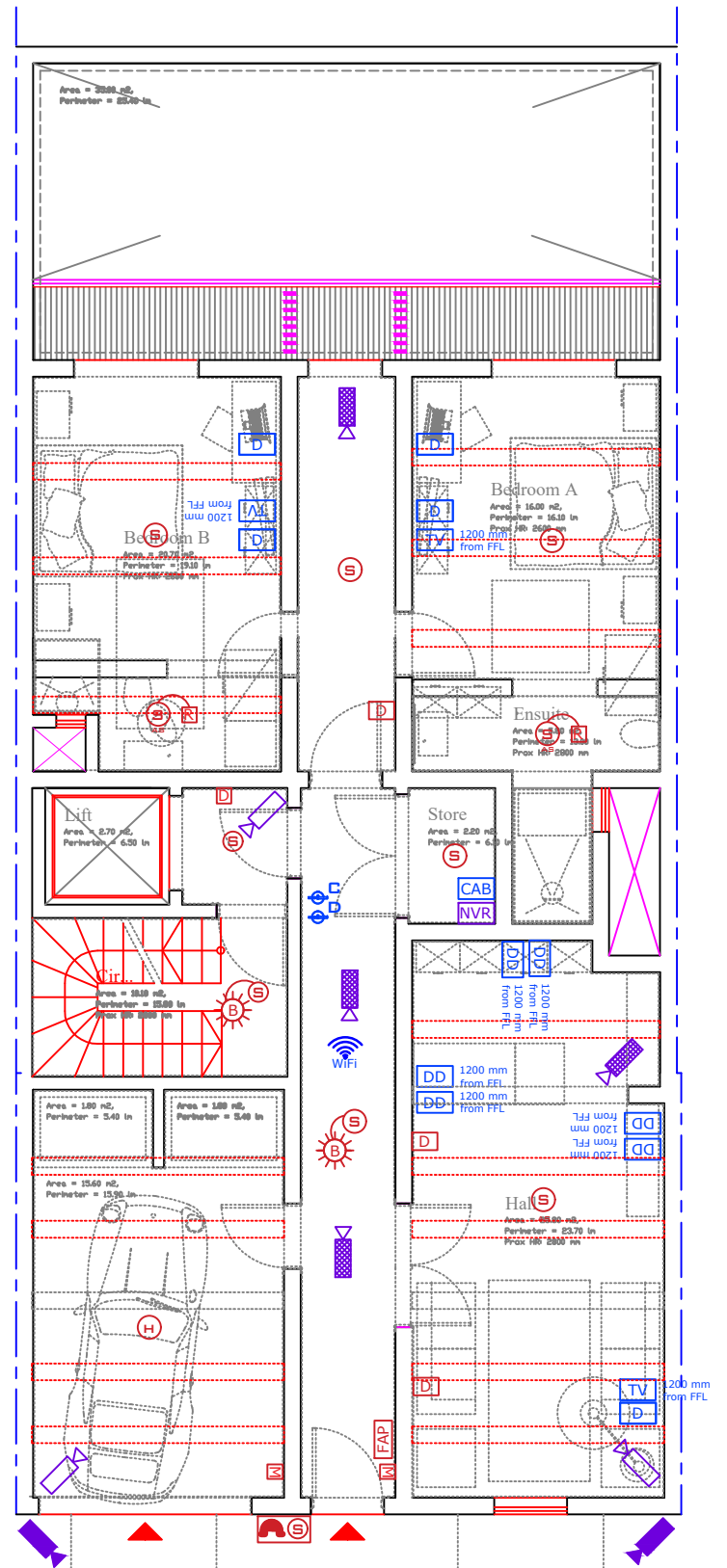
Fire Detection Alarm System, CCTV & Structured Cabling

Scale 1:100



Level -1

Scale 1:100



Level 0

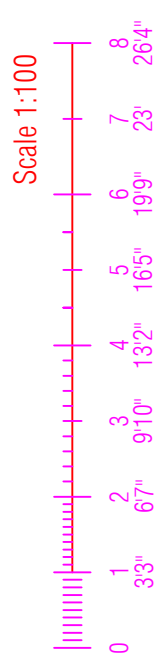
Scale 1:100

Legend: Fire Safety

- M Manual Call point
- H Heat Detector
- H_{AS} Heat Detector above Ceiling
- S Smoke Detector
- S_{AS} Smoke Detector above Ceiling
- R Remote LED Indicator
- S_{AS} Internal Sounder & Beacon
- S_{AS} External Sounder & Beacon
- D Magnetic Door Holder
- AIU Alarm Interface Unit
- FAP Fire Alarm Panel
- E_C Fire Extinguisher CO2
- E_D Fire Extinguisher Dry Power

Legend: Network & IP CCTV

- CAB Data Cabinet
- DD Double data point
- D Single data point
- TV Smart TV
- WiFi WIFI Access Point
- NVR Network Video Recorder
- IP Internal IP Camera Fixed Lens
- IP Internal IP Camera Vari-Focal Lens
- IP External IP Camera



NOTES:

- This drawing is to be read in conjunction with all other relevant drawings.
- All Power/lighting/ELV layouts are to be rechecked and approved by the engineer in charge of the project.
- Any discrepancies shall be brought forward to the attention of the designer in charge of the project immediately.
- The contractor shall be responsible for taking detailed measurements for every individual job which shall be checked on site prior to any work commencing.
- All dimensions shown on this drawing are only indicative and shall NOT be used for manufacturing purposes unless noted otherwise.
- This drawing is to be printed on A3 standard paper. Actual size printing command is to be used in order to retain scale.
- All dimensions are in millimeters.

COPY