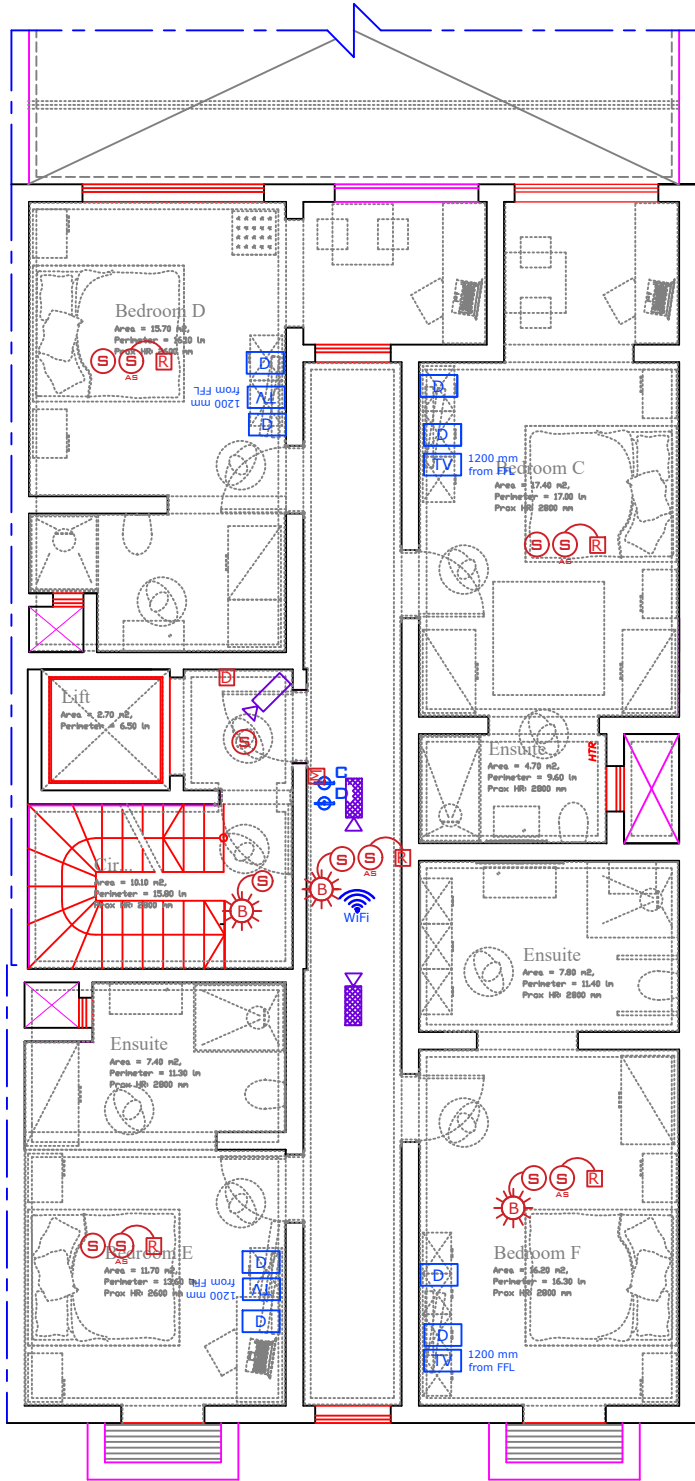


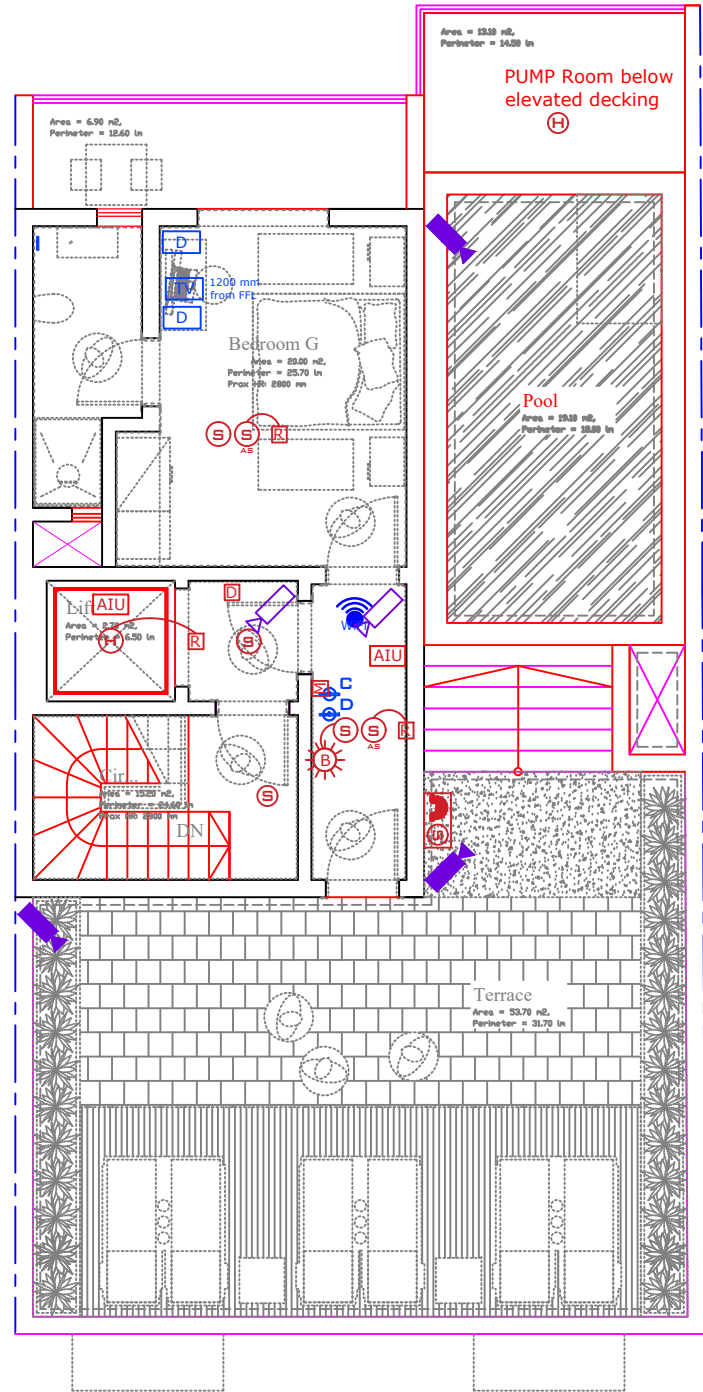
Fire Detection Alarm System, CCTV & Structured Cabling

Scale 1:100



Level 1

Scale 1:100



Level 2

Scale 1:100

Legend: Fire Safety

- Manual Call point
- Heat Detector
- Heat Detector above Ceiling
- Smoke Detector
- Smoke Detector above Ceiling
- Remote LED Indicator
- Internal Sounder & Beacon
- External Sounder & Beacon
- Magnetic Door Holder
- Alarm Interface Unit
- Fire Alarm Panel
- Fire Extinguisher C02
- Fire Extinguisher Dry Power

Legend: Network & IP CCTV

- Data Cabinet
- Double data point
- Single data point
- Smart TV
- WiFi Access Point
- Network Video Recorder
- Internal IP Camera
- External IP Camera



NOTES:

This drawing is to be read in conjunction with all other relevant drawings.

All Power/lighting/ELV layouts are to be rechecked and approved by the engineer in charge of the project.

Any discrepancies shall be brought forward to the attention of the designer in charge of the project immediately.

The contractor shall be responsible for taking detailed measurements for every individual job which shall be checked on site prior to any work commencing.

All dimensions shown on this drawing are only indicative and shall NOT be used for manufacturing purposes unless noted otherwise.

This drawing is to be printed on A3 standard paper. Actual size printing command is to be used in order to retain scale.

All dimensions are in millimeters.

COPY