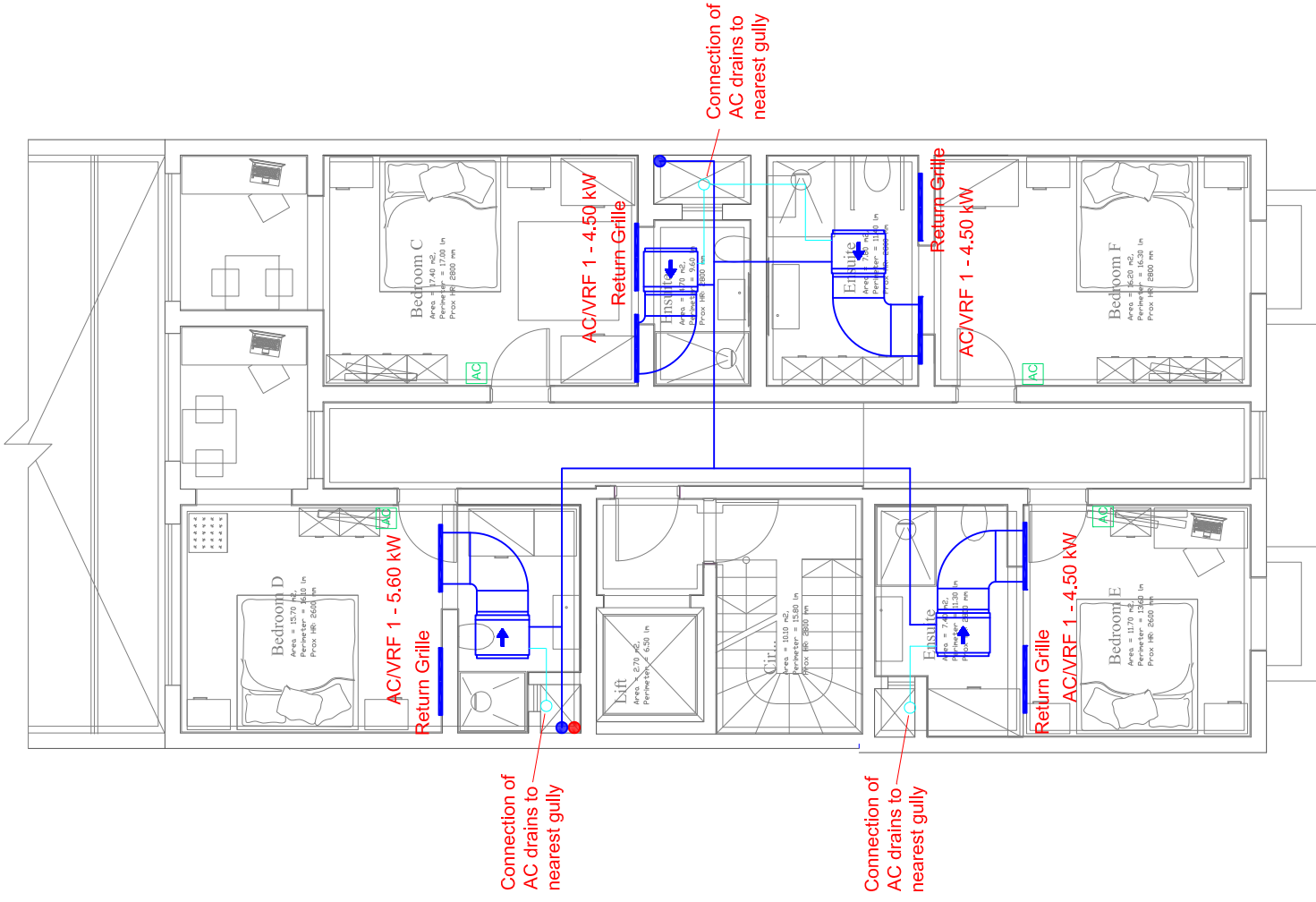


# LEGEND

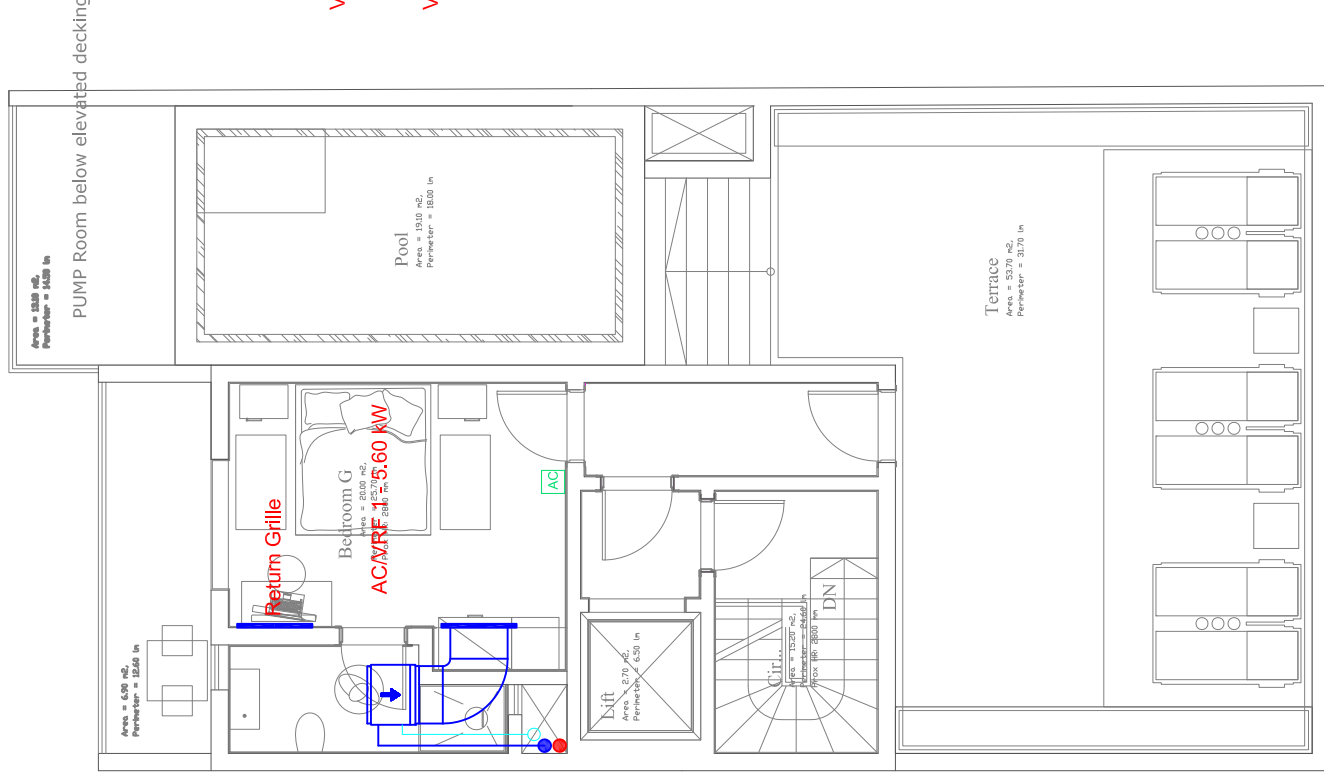
## AIR CONDITIONING

- ACS - # Indoor unit connected to Split Unit
- ACVRF 1 - # Indoor unit connected to VRF 1
- ACVRF 2 - # Indoor unit connected to VRF 2
- AC copper pipe work
- AC drains pipe work
- Split type outdoor unit
- VRF type outdoor unit
- Concealed type indoor unit
- High wall type indoor unit
- Soffit cassette type indoor unit
- AC wired controller



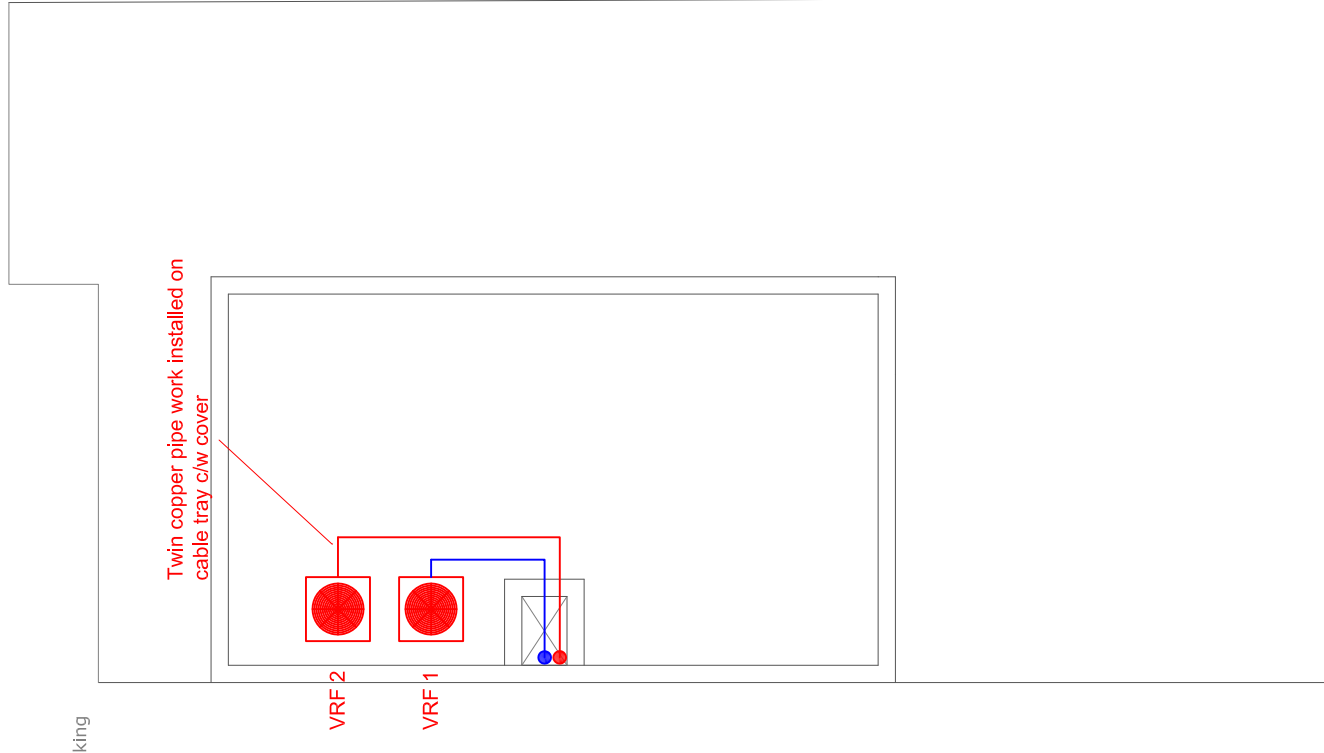
Proposed First Level

Scale 1:100



Proposed Second Level

Scale 1:100



Proposed Roof Level

Scale 1:100

### Notes

THIS DRAWING IS THE SOLE PROPERTY OF MATTHEW CAUCHI AND MUST BE USED ONLY FOR THE PURPOSE FOR WHICH IT WAS INTENDED. THIS DRAWING MUST NOT BE COPIED OR DISCLOSED TO ANY OTHER PARTY WITHOUT THE WRITTEN CONSENT OF MATTHEW CAUCHI.

### Client

Mr. Emanuel DeBattista

### Project

Proposed Boutique Hotel, Triq San Duminku, Victoria, Gozo

Air Conditioning System Layout

### Dwg No.

04

### Designed/Drawn by

Ing. Matthew Cauchi

### Date

03.07.2020

### Scale

1:100 (mm)

### Rev. No.

00

A3